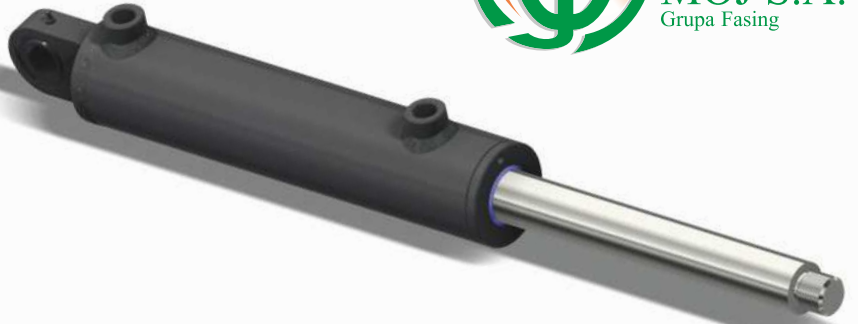




MOJ S.A. 1913  
Grupa Fasing



**KUŹNIA OSOWIEC**



**PRODUCT CATALOG**

## HYDRAULIC CYLINDER SHD...

Hydraulic cylinders are used in agricultural machinery and industrial equipment as well as construction equipment.

In addition to standard hydraulic cylinders, we also manufacture cylinders according to the customer's design and requirements.

The piston rod of the actuator may be equipped with a rod made of MnV6 material with a nickel-chrome coating NiKrom 350 having corrosion resistance in accordance with class 10 acc. ISO 10289.

The actuators can work in the range of nominal pressures of 20 MPa and maximum 25 MPa at operating temperatures from -30 to + 80°C or as customer requirements.



**\*\*\* Ask us, write us, call us!  
We will meet your requirements\*\*\***



## OUR OFFER:

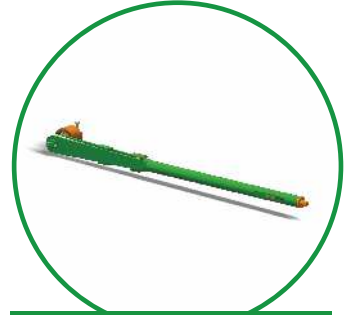
- Couplings for machines and devices up to 1000kW and small drilling equipment with hydraulic and pneumatic drive
- hot forged steel forgings 0.1-25 kg
- making forgings based on the delivered one documentation or product specimen
- preparation of forgings documentation in the technique spatial CAD / CAM including ours forging technology
- making forging tools
- heat and mechanical treatment of forgings
- shot blasting
- cold and hot calibration



**SET OF DUAL COUPLING ASSEMBLY**



**SET OF GEAR COUPLINGS WITH THE FDMM SHAFT**



**KD TORQUE SPANNER**



**GIGANT COUPLING**



**SH ROTO P FLUID COUPLING**



**ONE-WAY COUPLING SJ**



**MOJ COUPLING**



**DUAL B COUPLING**



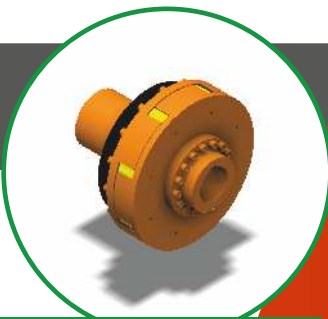
**SPR COUPLING**



**FINGER P COUPLING**



**SPG 1250 BELT MINING COUPLING**



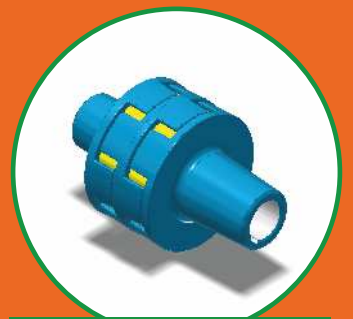
**COUPLING SET500**



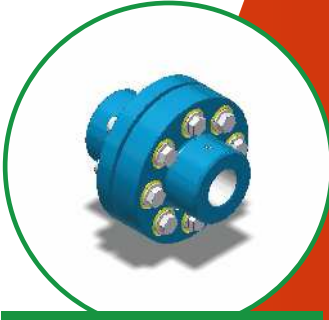
**COUPLING SP**



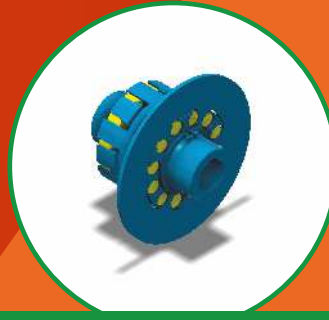
**COUPLING SPIN**



**COUPLING SPP-100**



**COUPLING SW-MOJ**



**TYTAN S360  
COUPLING WITH  
SECURITY RINGS**



**HYDRAULIC CYLINDER  
ENDS**



**CONTROL LEVER**



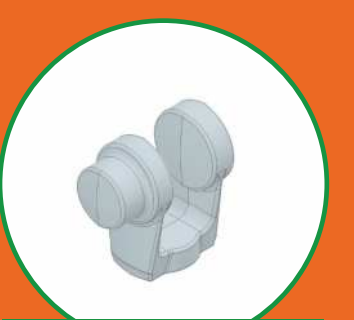
**CONTROL LEVER**



**HYDRAULIC CYLINDER  
ENDS**



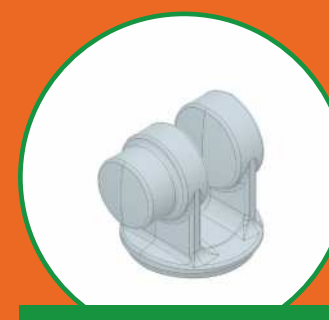
**FLANGE**



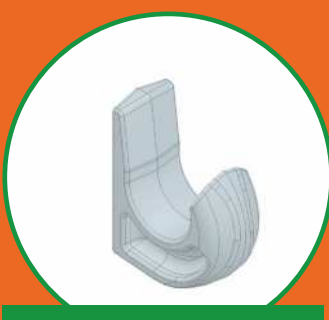
**CLEVIS**



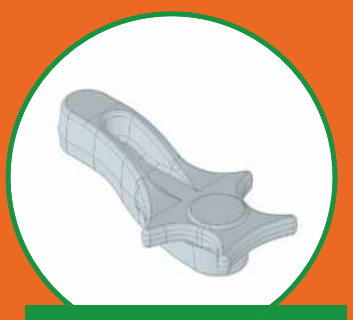
**CONTROL LEVER**



**HYDRAULIC CYLINDER  
ENDS**



**EXCAVATOR BUCKET  
HOOK**



**LOWER CONTROL  
LEVER**



**HYDRAULIC CYLINDER  
ENDS**



**HYDRAULIC CYLINDER  
ENDS**



**CONTROL LEVER**



**HYDRAULIC CYLINDER  
ENDS**







## CONTACT

### **MOJ S.A.**

 Tokarska 6 Street  
40-859 Katowice, Poland  
 +48 32 604 09 02  
+48 32 604 09 01  
 sekretariat@moj.com.pl  
marketing@moj.com.pl

### **Kuźnia Osowiec Branch**

 Fabryczna 1 Street  
46-023 Osowiec, Poland  
 +48 77 421 24 20  
+48 77 421 24 20 ext. 103

[WWW.MOJ.COM.PL](http://WWW.MOJ.COM.PL)