



We create innovative solutions

KONKO S.A. is a company boasting **30 years of activity**, engaging in projects related to the manufacture of steel structures. Our offer is addressed to customers requiring **high quality** of machining and welding. We realise individual customer orders based on specific technical documentation. Close and regular cooperation with OEMs gives us the possibility to offer **comprehensive solutions** for final users in mining, building, power and road building industry.

The enterprise offers convenient and flexible model of cooperation. We supplied our steel structures to **the largest** transport, road building and mining companies in Australia, India, Czech Republic, Germany, France, Norway and Sweden.

Offer

STEEL MACHINE STRUCTURES FOR ROAD BUILDING
STEEL STRUCTURES FOR MATERIAL TRANSPORT
STEEL STRUCTURES FOR INDUSTRIAL BUILDING
SHEARERS | CONVEYORS | MECHANISED SUPPORTS
OVERHAULS OF MINING MACHINES | GAS CUTTING
DIE BENDING | BEVELLING | PLASMA CUTTING | MACHINING

Machine park

1 

PLASMA BURNER
CNC 3D

3 

BEVELLING TABLES

3 

RADIAL BORING
MACHINES

19 

JIB CRANES
0.5 - 2 T

12 

MILLING MACHINES

1 

ROBOTISED BEVELLING
STATION

3 

OXY-GAS BURNERS

4 

HYDRAULIC
PRESSES

9 

SWL GANTRY CRANES
2 - 20 T

40 

WELDING MACHINES

Production potential

6000 

M² OF PRODUCTION
AREA

3600 

TONNES OF STEEL
STRUCTURES PER YEAR

150 

EMPLOYEES

30 

TONNES - MAXIMUM WEIGHT
OF SINGLE STRUCTURE

40 

WELDING STANDS

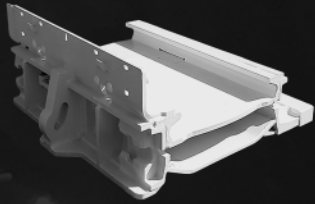
15 

ASSEMBLY STANDS

4 

ASSEMBLY HALLS

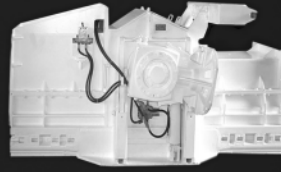
Products



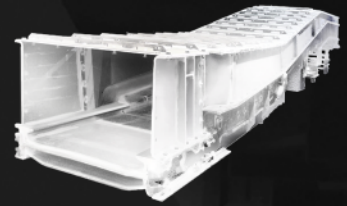
KONKO PANS



SPILL PLATE



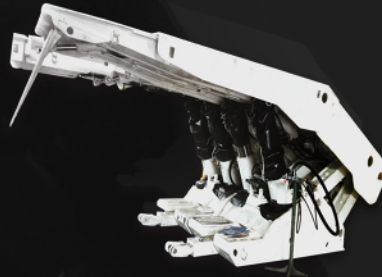
CRUSHER



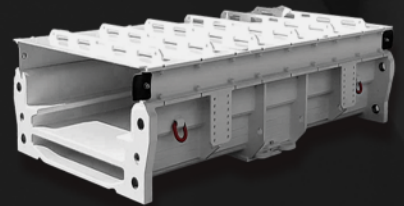
STAGE LOADER



CANOPY



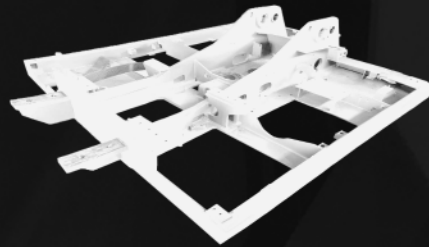
MECHANISED SUPPORT



PANS



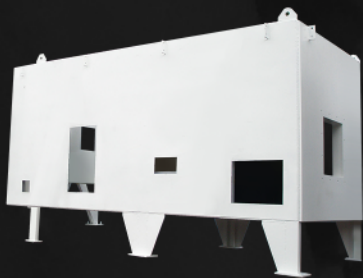
CONTAINER



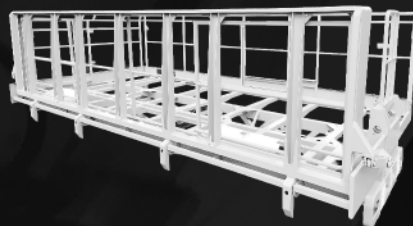
LOADER FRAMES



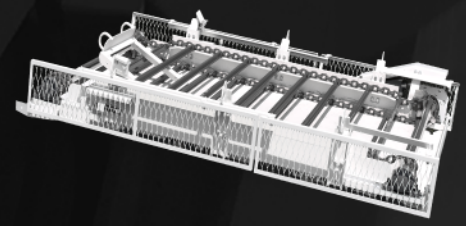
LOADER ARMS



COMPRESSOR CASINGS



WORK PLATFORM



ELEMENTS OF CLEANING STATION

WE INVITE YOU TO COOPERATION
KONKO S.A.

ul. Fabryczna 6
41-404 Mysłowice

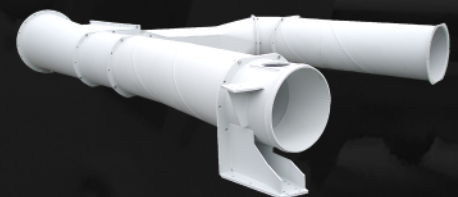
tel.: +48 (32) 31 70 550
fax: +48 (32) 31 70 551

www.konko.pl

konko@konko.pl



OFF-SHORE STRUCTURES



EXHAUST DUCTS